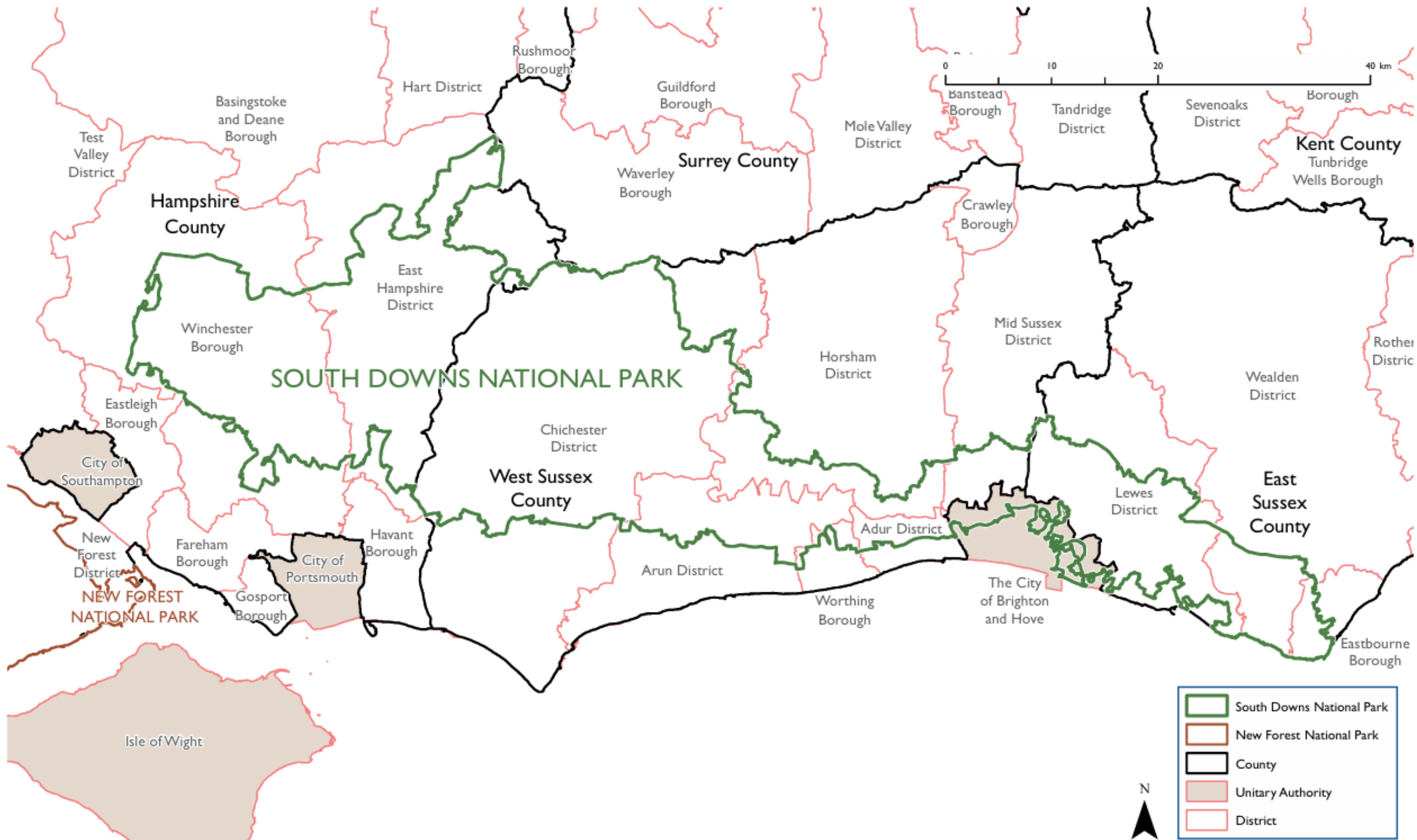


FIGURE 1.2: ADMINISTRATIVE BOUNDARIES AFFECTING THE SOUTH DOWNS NATIONAL PARK 2026



CONTENTS

1. INTRODUCTION	IV	ECONOMY.....	103
THE PARTNERSHIP MANAGEMENT PLAN CONTEXT.....	1	GREEN, BLUE AND COMMUNITY SPACES.....	117
THE LOCAL PLAN.....	1	TRANSPORT AND INFRASTRUCTURE.....	127
THE NATIONAL CONTEXT.....	2	5. SITE ALLOCATIONS	138
THE SUB-REGIONAL CONTEXT.....	2	INTRODUCTION.....	141
THE LOCAL CONTEXT.....	4	PRIMARY SETTLEMENTS AND STRATEGIC SITES.....	142
THE SOUTH DOWNS NATIONAL PARK AUTHORITY.....	4	OTHER SETTLEMENTS.....	215
2. VISION AND OBJECTIVES	6	APPENDICES	294
VISION.....	7	APPENDIX A1: MARKETING REQUIREMENTS FOR CHANGE OF USE APPLICATIONS.....	295
OBJECTIVES.....	7	APPENDIX A2: GLOSSARY.....	299
3. SPATIAL PORTRAIT AND STRATEGY	9	APPENDIX A3: SUPERSEDED POLICIES.....	314
OUR SPECIAL QUALITIES.....	10	APPENDIX A4: LOCAL PLAN INDICATORS.....	317
OUR LANDSCAPE.....	11		
OUR CHALLENGES.....	13		
OUR APPROACH TO DEVELOPMENT.....	13		
DEVELOPMENT NEEDS.....	14		
SPATIAL STRATEGY.....	16		
4. STRATEGIC POLICIES	20		
INTRODUCTION.....	22		
CORE POLICIES.....	23		
LANDSCAPE AND HERITAGE.....	31		
NATURE AND CLIMATE.....	48		
WATER AND POLLUTION.....	71		
HOUSING.....	84		

POLICIES**CORE POLICIES 23**

Strategic Core Policy SDC1: Furthering National Park Purposes	23
Strategic Core Policy SDC2: Development Strategy	24
Strategic Core Policy SDC3: Regenerative Development and Ecosystem Services	26
Strategic Core Policy SDC4: Major Development	29

LANDSCAPE AND HERITAGE31

Strategic Policy SDL1: Landscape Character	32
Strategic Policy SDL2: Design	34
Strategic Policy SDL3: Safeguarding Views	37
Strategic Policy SDL4: Relative Tranquillity	38
Strategic Policy SDL5: Dark Night Skies	39
Strategic Policy SDL6: Historic Environment and Cultural Heritage	41
Strategic Policy SDL7: Listed Buildings	44
Strategic Policy SDL8: Conservation Areas	45
Strategic Policy SDL9: Archaeology	46

NATURE AND CLIMATE..... 48

Strategic Policy SDN1: Nature Recovery	49
Strategic Policy SDN2: Designated Sites Hierarchy	52
Strategic Policy SDN3: The Sussex Bats Special Areas of Conservation (SACs)	55
Strategic Policy SDN4: The Arun Valley Special Protection Area (SPA)	56
Strategic Policy SDN5: Wealden Heaths Complex	57
Strategic Policy SDN6: The Solent Coast Special Protection Areas (SPAs)	59
Strategic Policy SDN7: Nutrient Neutrality	60
Strategic Policy SDN8: Trees, Woodland, Hedgerows and Scrub	62
Strategic Policy SDN9: Sustainable Construction	65
Strategic Policy SDN10: Renewable Energy	68

WATER AND POLLUTION71

Strategic Policy SDW1: Protection of the Water Environment	72
Strategic Policy SDW2: Flood Risk Management	75
Strategic Policy SDW3: Sustainable Drainage	77
Strategic Policy SDW4: The Coast	79
Strategic Policy SDW5: Pollution and Air Quality	82
Strategic Policy SDW6: Contaminated Land	83

HOUSING..... 84

Strategic Policy SDH1: Housing Supply	85
Strategic Policy SDH2: Mix of Homes	87
Strategic Policy SDH3: Accessible & Adaptable Homes	89
Strategic Policy SDH4: Specialist and Older Persons' Accommodation	90
Strategic Policy SDH5: Affordable Homes	92
Strategic Policy SDH6: Rural Exception Sites and Rural Estates Housing	95
Strategic Policies SDH7 and SDH8 for Replacement and Subdivision of Dwellings and Householder Development	97
Strategic Policy SDH9: New Rural Workers' Dwellings	100
Strategic Policy SDH10: Gypsies, Travellers and Travelling Showpeople	101

ECONOMY 103

Strategic Policy SDE1: Economic Development	104
Strategic Policy SDE2: Agricultural Development, Diversification and Conversion of Rural buildings	105
Strategic Policy SDE3: Winemaking and Wine Tourism	107
Strategic Policies SDE4, SDE5 and SDE6: Town and Village Centres and Shops in the Countryside	109
Strategic Policies SDE6: Shops Outside Centres	110
Strategic Policy SDE7: Regenerative Tourism	112
Strategic Policy SDE8: Equestrian Development	114
Strategic Policy SDE9: Shop Fronts & Advertisements	115

GREEN, BLUE AND COMMUNITY SPACES..... 117

Strategic Policy SDG1: Community Facilities	118
Strategic Policy SDG2: Green and Blue Infrastructure	120
Strategic Policy SDG3: Public Open Space, Sports and Recreational Facilities	121
Strategic Policy SDG4: Local Green Spaces	124

TRANSPORT AND INFRASTRUCTURE 127

Strategic Policy SDT1: Vision-led Transport Approach	128
Strategic Policy SDT2: Active Travel Routes	130
Strategic Policy SDT3: Highway and Public Realm Design	132
Strategic Policy SDT4: Parking Provision	133
Strategic Policy SDT5: Infrastructure	135
Strategic Policy SDT6: Telecommunications Infrastructure	136

ALLOCATION POLICIES

LEWES 143

SDA1: North Street Quarter: Comprising Phoenix Area (A); Former Bus Station (B); and Eastgate Wharf (C)	143
SDA2: Land at Old Malling Farm, Lewes	147
SDA3: Malling Brooks, Lewes	149
SDA4: County Hall, St Annes Crescent	151
SDA5: East Sussex College, Mountfield Road, Lewes	153
SDA6: Springman House and Ambulance Station, North Street / Lancaster Street	156
SDA7: Land rear of the White Hart, 55 High Street	157

PETERSFIELD 159

SDA8: Land at and to the rear of Causeway House	159
SDA9: Land south of The Causeway	162
SDA10: Land at Penns Place	164
SDA11: Land South of Paddock Way	167
SDA12: Land at Drum Court	169
SDA13: The Courtyard, Heath Road	170
SDA14: Land at Festival Hall	172
SDA15: Land at Windward, Reservoir Lane	174

MIDHURST & EASEBOURNE 176

SDA16: Holmbush Caravan Park, Midhurst	176
SDA17: Land at the Fairway, Midhurst	178
SDA18: Land adjacent to The Grange Car Park	179
SDA19: Land at Forest Road and Hawthorn Close	180
SDA20: Former Bus Depot, Pitsham Lane	182
SDA21: Land east of Pitsham Lane	183
SDA22: Land adjacent to former Easebourne School	185
SDA23: Midhurst Community Hospital and 1-2 Rotherfield Mews	187
SDA24: Land west of Budgenor Lodge	188

PETWORTH 190

SDA25: Land south of Herbert Shiner School	191
SDA26: Land at Rotherbridge Lane	195
SDA27: Land north of Northend Close	196

LISS 198

SDA28: Land at Farnham and Station Roads	198
SDA29: Land at Copper Beeches, Silver Birch and Heathmount	201

SHOREHAM CEMENT WORKS 203

SDA30: Shoreham Cement Works	203
------------------------------	-----

LIPHOOK..... 206

SDA31: Land west of Liphook	207
SDA32: Land at Westlands House off Longmore Road	213

ALFRISTON 216

SDA33: Kings Ride, Alfriston	216
SDA34: Alfriston Court, Alfriston	217

AMBERLEY 219

SDA35: East Street Farm, Amberley	219
-----------------------------------	-----

BINSTED 221

SDA36: Land at Clements Close, Binsted	221
SDA37: New Barn Stables, The Street, Binsted	223
SDA38: Land south of Lovell Gardens, Binsted	224

BURY 225

SDA39: Land east of Coombe Crescent, Bury	225
---	-----

CHERITON 227

SDA40: Land south of the A272 at Hinton Marsh, Cheriton	227
---	-----

COLDWALTHAM 229

SDA42: Land south of London Road, Coldwaltham	229
SDA43: Land north of Kings Lane, Coldwaltham	231

COOKSBRIDGE 233

SDA44: Land at Beechwood Lane, Cooksbridge	233
--	-----

DROXFORD 235

SDA45: Land at Park Lane, Droxford	235
------------------------------------	-----

FERNHURST 237

SDA46: Land at Hawksfold, Fernhurst	237
-------------------------------------	-----